



Clockology

HOW TO ADD CUSTOM WATCH
FACES TO YOUR APPLE WATCH

What is Clockology?

As of July of 2023, and in WatchOS 9, there are 56 different watch faces that Apple offers. You can of course make changes within each of these 55 faces to customize them further and change which complications you are using. However, you are limited to what Apple believes are useful, attractive faces. What if you want to venture out from what Apple gives you and be more creative? What if you would like to personalize your watch face to your own tastes? There are ways to do this, and I believe the best way is with the app called Clockology.

With Clockology you can download watch faces that other people have made and shared or you can create your own designs to use. If you want to design, Clockology has a dashboard editor that you can work in to create your watch face. This editor runs on iPhone, iPad, and Mac. Your designs are whatever your imagination wants to create!

Clockology is a free app to create on and use and you don't have to pay for anything to use it. However, if you want to use some of the features that come with the app, you need to buy a subscription. These features include:

- live weather updates
- image strips that support day of the week, month, AM/PM, 12/24 hour, and moon phases.
- Your creations will automatically be tagged with your name and social media information

A subscription costs \$2.99/month or \$24.99/year.

“Minimum operating systems are iOS 15, iPadOS 15, and WatchOS 8 for the iPhone, iPod Touch, iPad, and Apple Watch respectively.”

Create and view interactive dashboards on all of your devices.

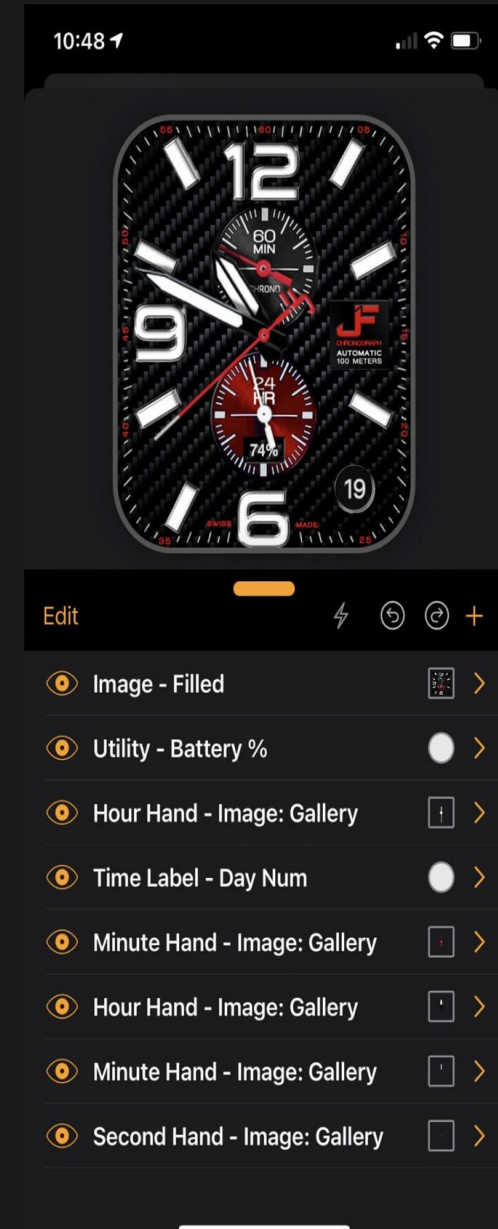
With a powerful editor, you can tap into your creative side and make your own feature-rich dashboards custom-tailored to the information and visuals you would like to see. In addition, you can share and import creations from other users around the world.

- See beautiful clocks on your nightstand or desk using your iPhone, iPad, iPod Touch, or Mac.*
- Create your own clocks and share them with others.

Clockology has support for the following layer types:

- **Video:** Plays back high speed video and has different ways of triggering the playback
- **Sound:** Plays different sounds with a few ways of triggering the sounds playback like on the hour or when you tap on the device
- **Date and Time:** Used for displaying things like current hour, minute, or seconds with a wide variety of fonts and effects
- **Weather:** Using your current location, will show the current weather as icon, temperature, or words
- **Activity & Health:** Steps and goals can be represented as rings, bars, or text
- **Device:** Battery level and other device specific information

*Clockology for Mac requires macOS 11 Big Sur or later.



How do I Find Watch Faces?

Some people who design faces for Clockology are willing to share their designs with the world and they post them in a number of places where you can download them to use. The app will have some designers featured and you can download and use their faces. The biggest and best place I've found is the Facebook group called "Clockology Fans." This is where I get my faces that I use.

<https://www.facebook.com/groups/AWFgroup/>

Other places to search include Reddit:

<https://www.reddit.com/r/Clockology/>

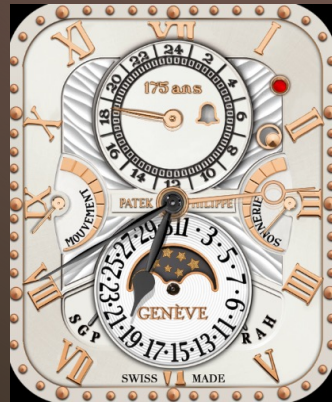
Telegram:

<https://t.me/s/ClockologyOfficial/1949>

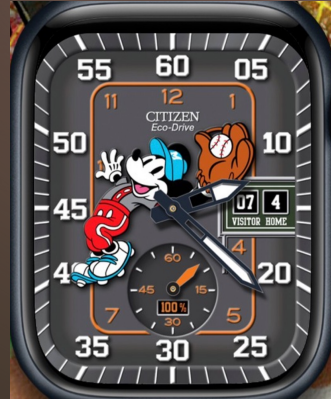
Websites-do a search for Clockology faces and you'll find them.



Examples of Watch Faces You Might Download



Examples of Watch Faces You Might Download



Perhaps You'd Like to Wear Iconic Faces?



IMG_7723.PNG



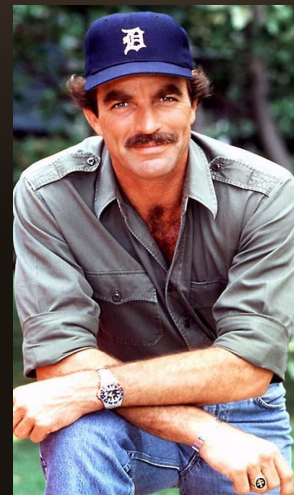
Steve McQueen as Michael Delaney
-LeMans (1971)-Tag Heuer Monaco



Sean Connery as James Bond-Rolex Submariner 6538



Tiger Woods Rolex Sea Dweller Deepsea "James Cameron"



Tom Selleck as Thomas Magnum-Magnum P.I.-
Rolex GMT Master 16750 "Pepsi"

Perhaps You'd Like a Video Face?

Star Wars-The Death Star
Attack Plans Video



Back to the Future
Flux Capacitor



James Bond
Gun Barrel



Clockology limitations

Clockology isn't capable of fully replacing your Apple Watch home screen. You are setting the app up to act as your watch face with limited complications. When you have a clockology face running, you just need to press the digital crown to get back to your home screen like you'd do in any app on your watch.

Clockology faces can have animations and video and has some complications like weather, activity monitor, and heart rate, but you can't run things like the stopwatch or other third-party complications from a clockology screen. To access these functions, you have to press the digital crown to go back to your watch first.

You also can't access things like notifications or the control center with a swipe. Again, you have to first press the digital crown to get back to the main watch functions.

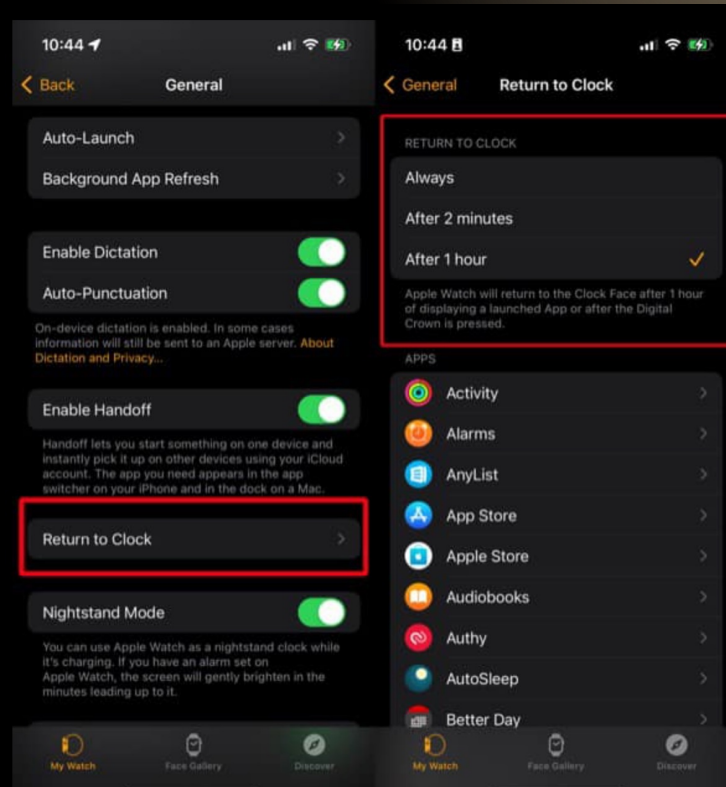
When you first start using Clockology, you will be prompted to allow Clockology to access health data. You don't have to allow access, but if you want health data complications to work inside these faces such as steps, heartrate, etc., you need to allow access.

Clockology limitations

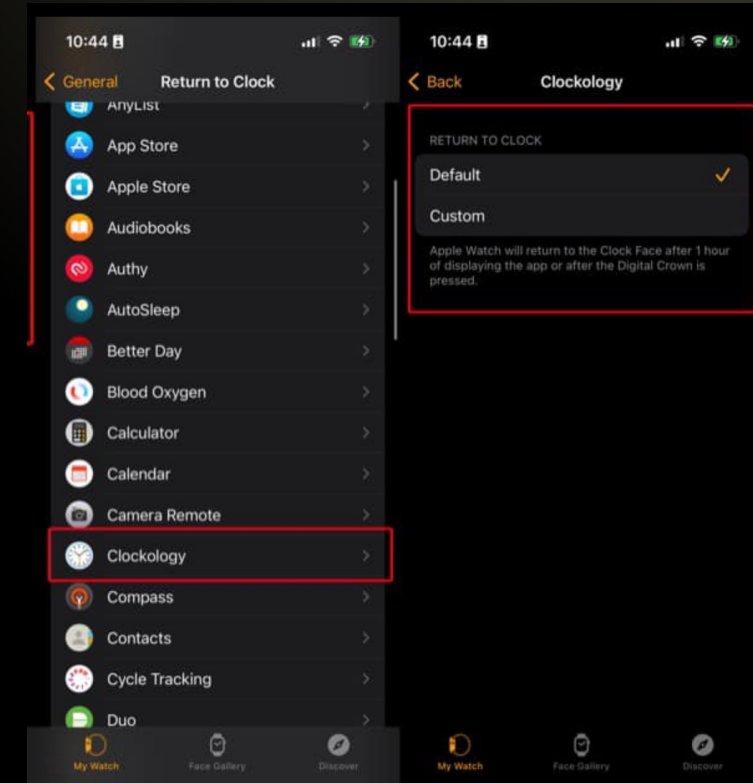
I do find that while I'm running a Clockology watch face, my battery drains a little faster. Some people say it doesn't.

Since Clockology isn't a native Apple Watch face, it won't stay on indefinitely. Clockology is an app, and all Apple Watch apps have a run time limit depending on the setting for your watch. While Clockology is running, you need to raise the watch and look at the face to keep it running. Otherwise, it will revert to your default Apple Watch face.

Here is how to change your setting for your watch to set it to the maximum of one hour. Go to the watch app on your iPhone and click on "general." Then click on "Return to Clock" and set to "After 1 hour."



Then under "Return to Clock," scroll down to "Clockology" and press and set the Return to clock to "Default."



Personal Watch Faces

I use a combination of watch faces that others have made and make my own watch faces. If you want to make your own watch face, you can do all of your editing within the Clockology editor. It just depends on what you want to create. I use a combination of Clockology and Photoshop because Photoshop gives me more options for designing my background and watch hands. Just know that you don't have to use a graphic design program at all. As an example of some of my creations, here is a series I created for my favorite sports teams:



I started in Photoshop by using a jersey for the background. Next, I created the numbers separately in Photoshop that matched the jerseys or in the case of St. Louis City, I used MLS soccer balls to represent the numbers. I then separately created custom watch hands to go along with the theme (hockey sticks and soccer socks for example) in Photoshop. Next, I imported this background jersey into the Clockology editor, where I then added my numbers and hands and added the animation to the hands. Finally, I added the complications that I wanted and made sure everything was in the correct positions to work together. Once I've created my face, I then save it and import it to my watch.

Clockology Guide Video



Clockology Resources

Clockology Version 2 Guide: https://docs.google.com/document/d/1ktnvJ_k7pQ_B1-ZqgPIWP3ilgcBacL-Rvku67BcsCEQ/edit

Clockology App Website: <https://clockologyapp.com>

Clockology FAQ's: <https://clockologyapp.com/faq/>

Clockology Official YouTube Page: <https://www.youtube.com/@clockology2893/videos>